

# Room Style Ideas



'Colour/ensuite opening idea'



'Carpet we like for upstairs and stairs?'

iSense - Splendour - Urban Sky

3 21:31 73%  
flooringsuperstore.com

MENU FLOORING SUPERSTORE.COM

iSENSE®

ISENSE SPLENDOUR URBAN SKY

£19.19 per m<sup>2</sup> In stock

☆☆☆☆☆ WRITE A REVIEW

Width (m) \*



## Bedroom Master M&V Bought Furniture - Details



### BED - PJMN0150

[https://www.firstfurniture.co.uk/alf-italia-monte-carlo-5ft-kingsize-bed.html?gclid=CjwKEAiA-rfDBRDeyOybg8jd2U4SJAAoE5XqubFD8oWIF9YlKjbBxDyKWvdo5aPi-H7D66UkjNBhsxC3x\\_w\\_cB](https://www.firstfurniture.co.uk/alf-italia-monte-carlo-5ft-kingsize-bed.html?gclid=CjwKEAiA-rfDBRDeyOybg8jd2U4SJAAoE5XqubFD8oWIF9YlKjbBxDyKWvdo5aPi-H7D66UkjNBhsxC3x_w_cB)

Dimensions:

W 1930 x D 2190 x H 1240 mm

Features:

- 5ft Kingsize Bed
- Colour: Charcoal
- Material: High Gloss
- Grand Piano Finish



### NIGHT STAND - PJMN0150

RIGHT KJMN130

LEFT KJMN131

<https://www.firstfurniture.co.uk/alf-italia-monte-carlo-bed-side-cabinet.html>

Dimensions:

W 658 x D 503 x H 506 mm

Features:

- Colour: Charcoal
- Material: High Gloss
- Grand Piano Finish
- 2 Drawers



### DRESSING TABLE - KJMN150

<https://www.firstfurniture.co.uk/alf-italia-monte-carlo-dressing-table.html>

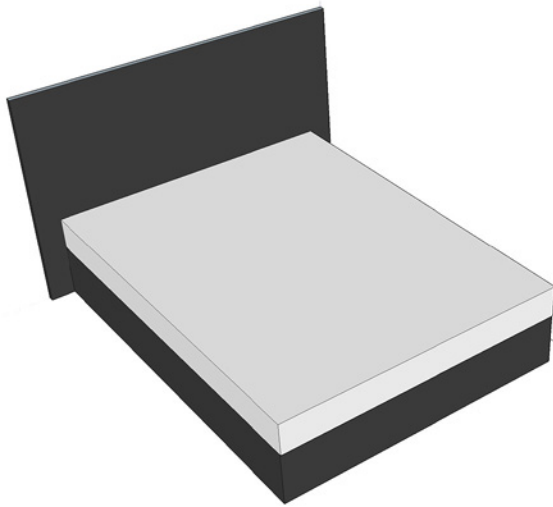
Dimensions:

W 1200 x D 520 x H 760 mm

Features:

- Colour: Charcoal
- Material: High Gloss
- Grand Piano Finish
- 2 Doors

# Bedroom Master M&V Bought Furniture - 3D Scale Models



## BED 1650mm Base - 3D Link Below

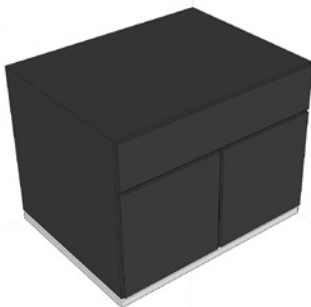
<https://www.dropbox.com/s/fx034yitvg1tpmp/Bed%20-Head-board%201930%20x%20Base%201650%20x%20D%202190%20x%20H%201240%20mm%20.skp?dl=0>

Dimensions:

Headboard 1930 x Base 1650  
x D 2190 x H 1240 mm

Features:

- 5ft Kingsize Bed
- Colour: Charcoal
- Material: High Gloss
- Grand Piano Finish



## NIGHT STAND - 3D Link Below

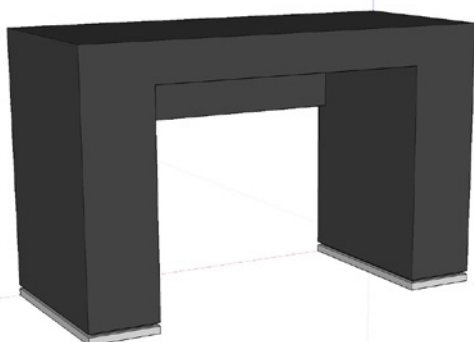
<https://www.dropbox.com/s/53tp6hehwwb1cpb/Night%20-stand%20W%20658%20x%20D%20503%20x%20H%20506%20mm.skp?dl=0>

Dimensions:

W 658 x D 503 x H 506 mm

Features:

- Colour: Charcoal
- Material: High Gloss
- Grand Piano Finish
- 2 Drawers



## DRESSING TABLE - KJMN150

<https://www.dropbox.com/s/payhgd20sc2kri/Dressing%20Table%20W%201200%20x%20D%20520%20x%20H%20760%20mm.skp?dl=0>

Dimensions:

W 1200 x D 520 x H 760 mm

Features:

- Colour: Charcoal
- Material: High Gloss
- Grand Piano Finish
- 2 Doors

# HOW THE FURNITURE FITS ON THE WEST WALL USING AND FULL LISTED BED DIMENSIONS

Headboard - 1930mm

Base - 1650mm ( Measured width)

Listed Base - 1570 x 2070mm (As Below)

D - 2190mm (Including Headboard)

H - 1240 mm



## **Q.S./UK 5" BED PJMN0150**

Inner size inch 61 1/2" x 81 1/2" - cm 157 x 207

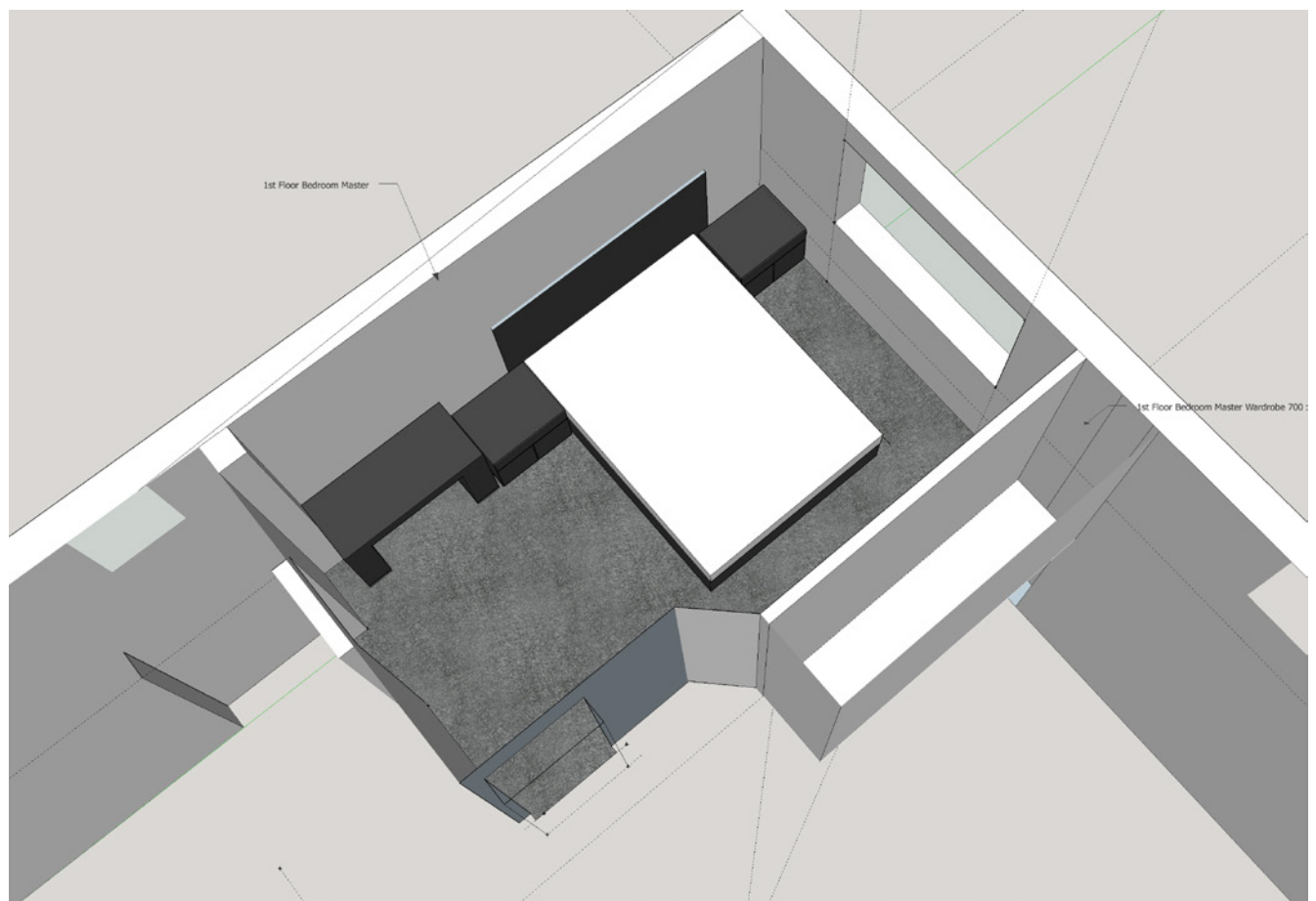
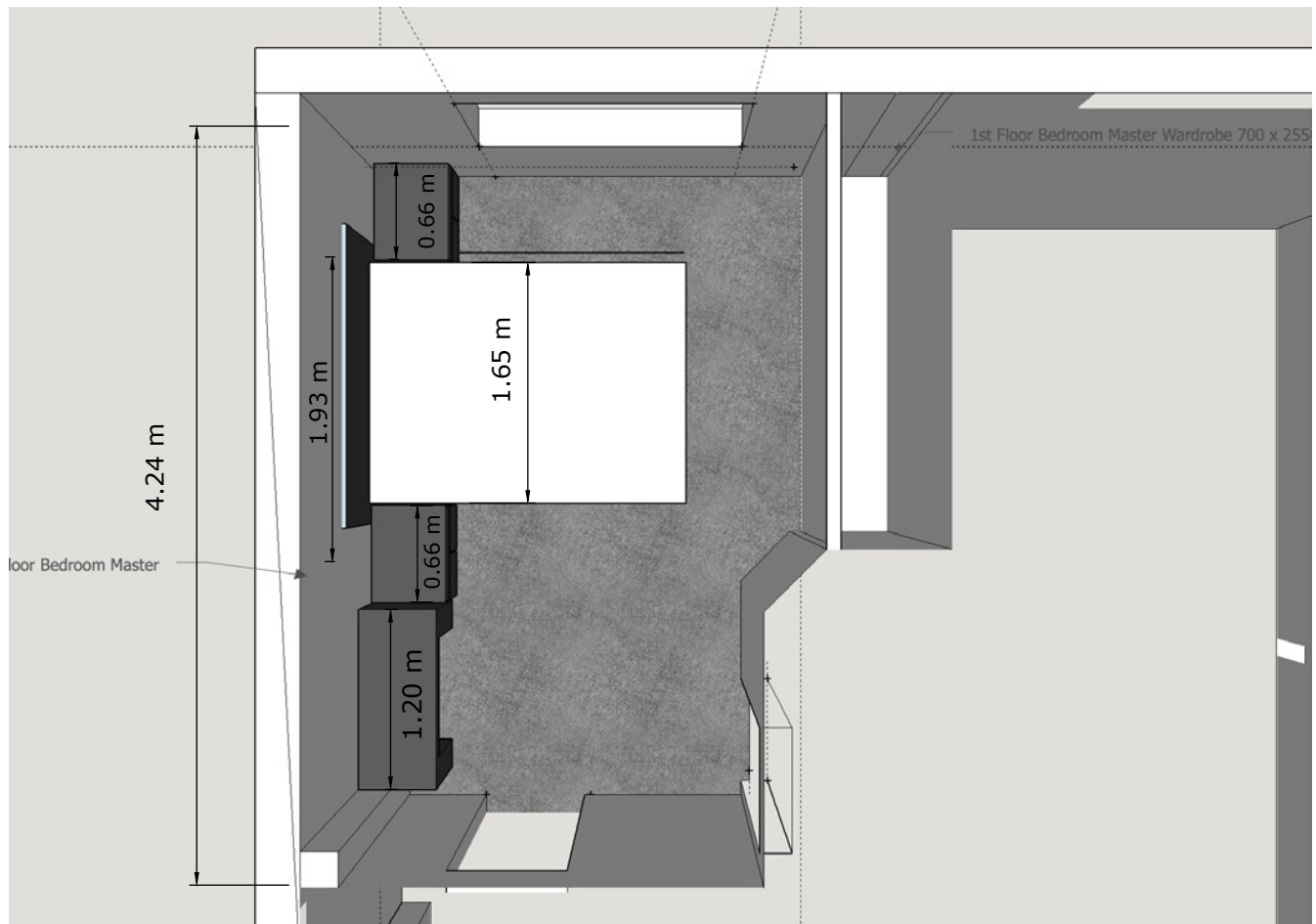
inch W 76" D 87" H 49"

cm L 193 P 219,8 H 123,8

**WITHOUT our orthopedic spring**

Crts 3 kg 106 m<sup>3</sup> 0,32

# Bedroom Master M&V Bought Furniture - In-Situ 3D Model



# BESPOKE WARDROBE DESIGN

Space Size - W 2550 x D 600-750 (approx.) x H 2335mm

## BRIEF

To replace the built-in wardrobe in the master bedroom with one that not only complements but leads the design for the room with certain specified functionality.

The overall spec is as such.

- The full available space is W 2550 x D 600-750 (can't tell fully until the old wardrobe is removed) x H 2335

- It is to house a 32" TV in the middle section. Actual width and height of the TV need to be measured. The link below is for a screen dimension chart. I estimate the width of the TV to be at least 72cm with housing.

TV Size Chart - [https://en.wikipedia.org/wiki/Display\\_size](https://en.wikipedia.org/wiki/Display_size)

- Other peripherals for the TV will also need to be housed – X-Box has been mentioned and I have requested details on any more ie. Receiver boxes, games consoles, speakers etc. with suitable power and connectivity.

- I have already provided initial designs which have had positive feedback. [redacted] has requested to see what 3 slide mirrored fronts would look like instead of the 2 presented. There are points to discuss in relation to this regarding full use of available space, aesthetic and functionality. More details on the following pages.

- Aesthetic guides from [redacted] are shown in the document.

- The style of the sliding doors should be reflected in the entrance to the en-suite bathroom.

- A range of storage space is required – hanging clothes, shoes, drawers, documents and smaller items such as belts, watches and jewellery

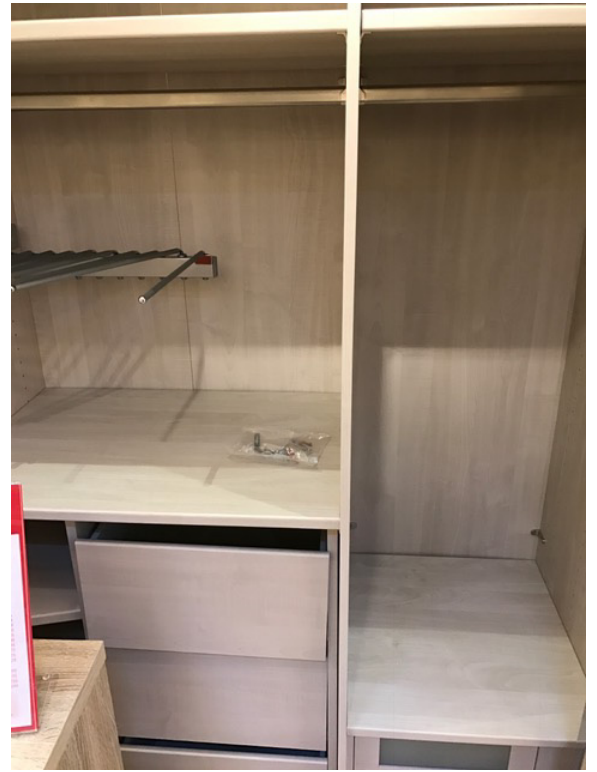
## NOTES\*

The wardrobe is going to be uniquely designed and made to fulfil the above criteria. The labour required to put it together will require a joiner, electrician and decorator. The electrics and decorating will be undertaken at the same time as other requirements in overall the design. To put the wardrobe together and craft any bespoke elements will require a joiner. If there are to be any other bespoke pieces to be made such as a stage and any other objects for [redacted] room I suggest these are all done at the same time too.

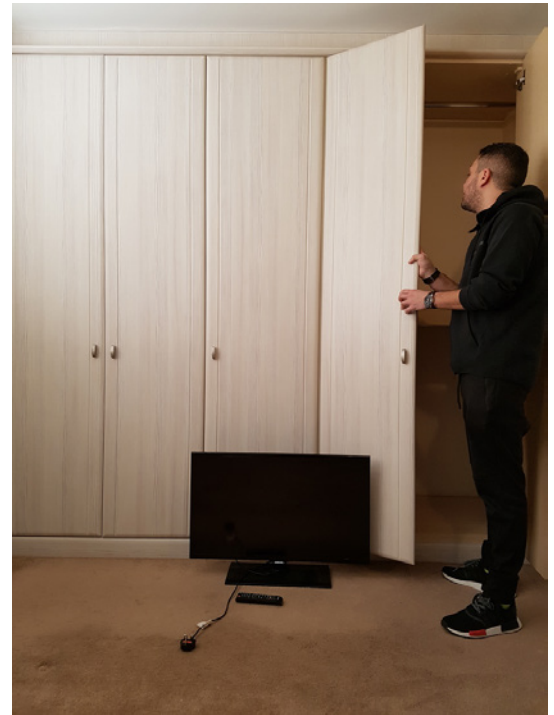
I will personally oversee all of this and give it the final finish and any artistic touches to be discussed with [redacted]

What I aim to do to reduce costs and cut down on production time is source, where possible, readymade and off the shelf components to use in the fabrication of the complete piece.

# Wardrobe Style Ideas from

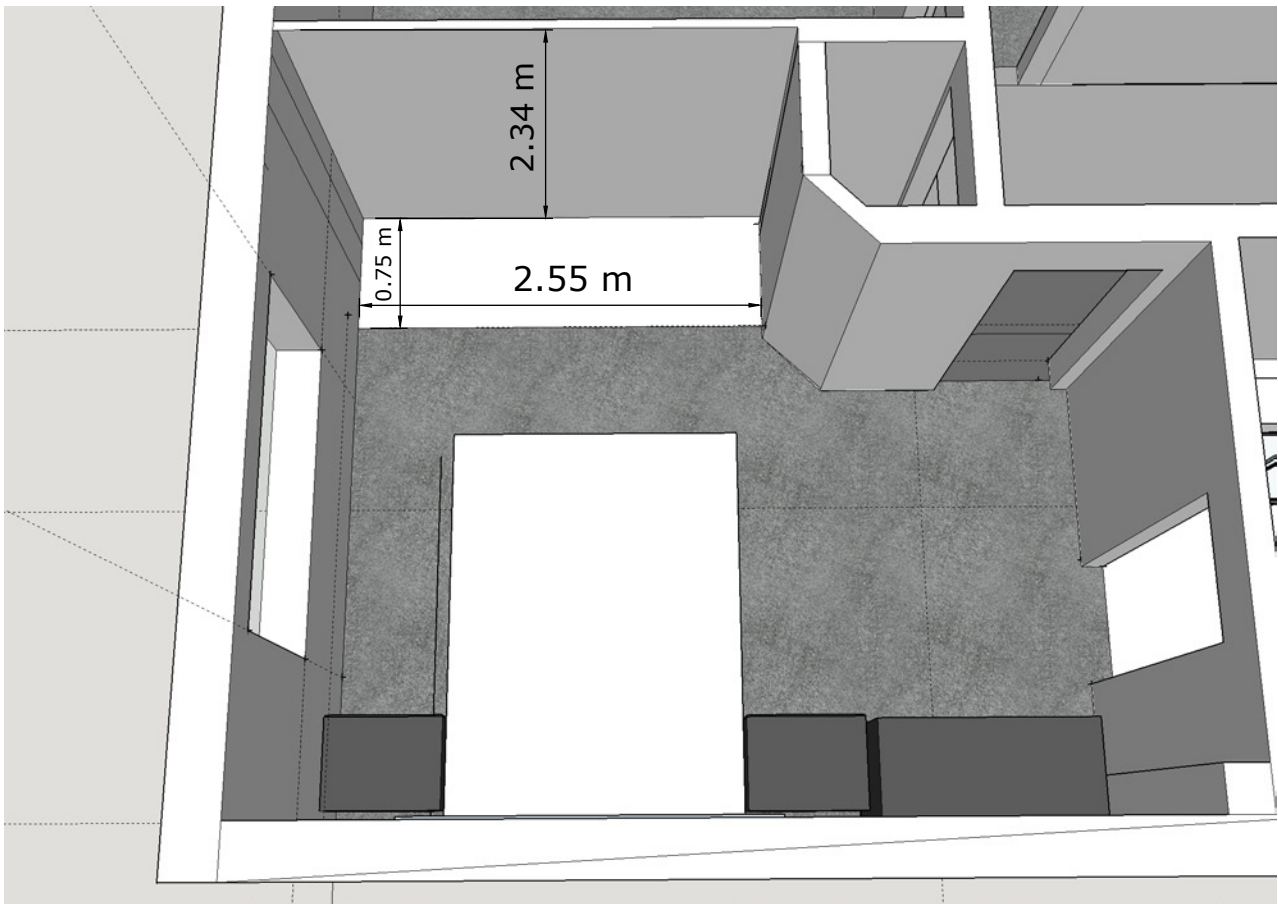


# Wardrobe as is

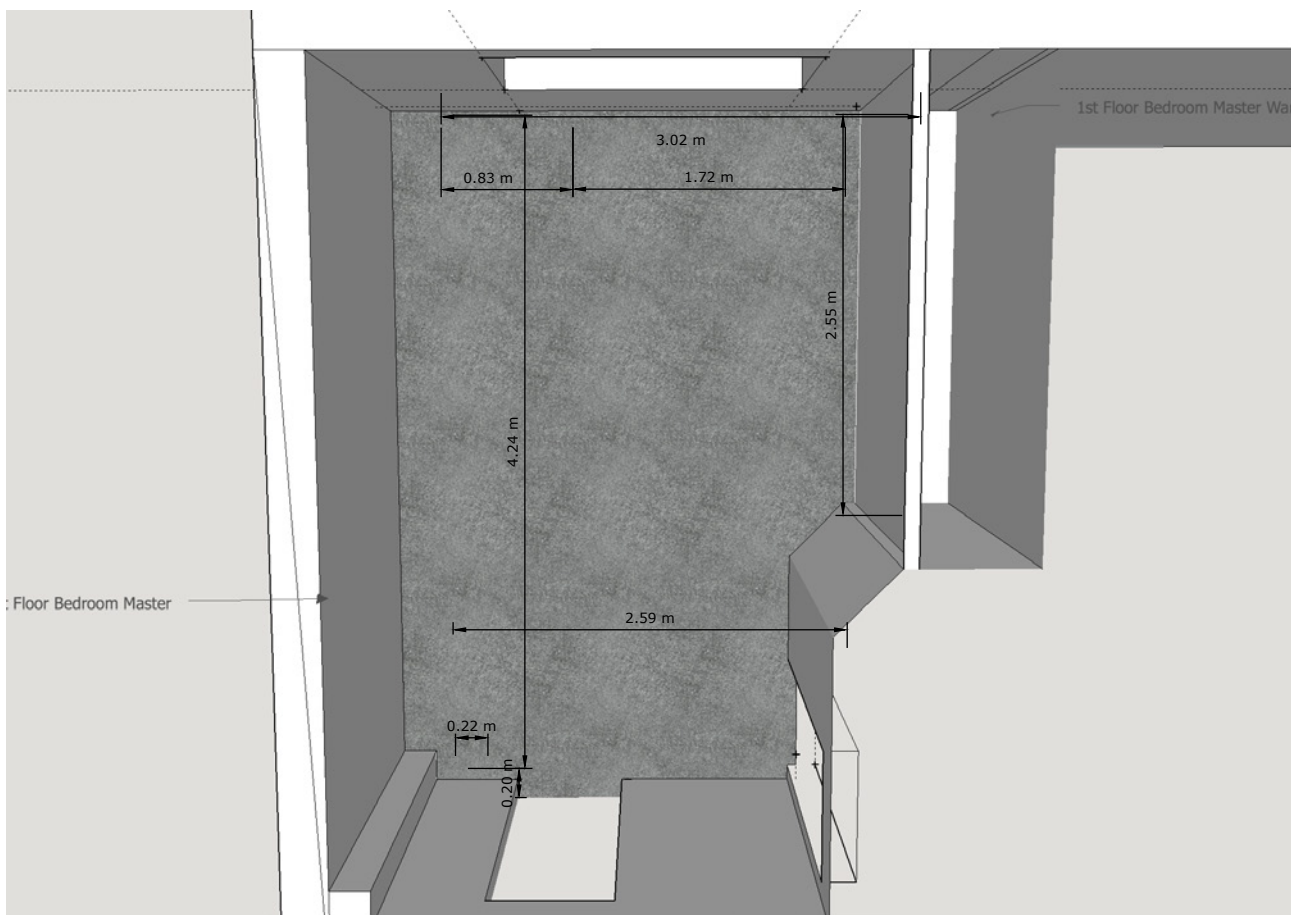




## Wardrobe space in 3D model



## Overall Bedroom Dimensions



# Bespoke Wardrobe Design - Elements

## Exterior of the Wardrobe

off the shelf products as possible part of the construction

### Screwfix

SPACEPRO 3 DOOR FRAMED GLASS SLIDING WARDROBE DOORS BLACK 2236 X 2260MM 3 PACK - £255.99

<http://www.screwfix.com/p/spacepro-3-door-framed-glass-sliding-wardrobe-doors-black-2236-x-2260mm-3-pack/8986f>



Each door is 2223mm high x 762mm wide with 2692mm top and bottom trackset.

#### PRODUCT CONTENTS

3 x glass doors, frame and colour matched trackset.

<b>Brand</b>	Spacepro
<b>Colour</b>	Black
<b>Construction Material (Building)</b>	Steel Framework
<b>Easy Assembly</b>	Pre-Assembled for Easy Installation
<b>Fixings Supplied</b>	Fittings Not Supplied
<b>Frame Colour</b>	Black
<b>Manufacturer Guarantee</b>	10 Year Manufacturer's Guarantee (T&Cs Apply)
<b>Pack Size</b>	3
<b>Panel Colour</b>	Black
<b>Pieces in Pack/Case</b>	3
<b>Pieces in Pack/Case</b>	3
<b>Pieces in Pack/Case</b>	3
<b>Product Height</b>	2260 mm
<b>Product Type</b>	Framed Glass Sliding Wardrobe Doors
<b>Product Width</b>	2236 mm

## Exterior of the Wardrobe

off the shelf products as possible part of the construction

### B&Q

**PREMIUM SELECT BLACK SLIDING WARDROBE DOOR KIT (H)2.22 M (W)914 MM, PACK OF 2 - £445**

[http://www.diy.com/departments/premium-select-black-sliding-wardrobe-door-kit-h222-m-w914-mm-pack-of-2/1213113\\_BQ.prd](http://www.diy.com/departments/premium-select-black-sliding-wardrobe-door-kit-h222-m-w914-mm-pack-of-2/1213113_BQ.prd)

## How many standard sized sliding doors will you need?

The table below will help you determine how many of our fixed sized sliding doors you will need. (This only applies to the 610, 762 & 914mm wide doors).



Ideal Opening Width		Door Size	Track Length
1195mm 1499mm 1803mm	<b>2</b>	610mm 762mm 914mm	Small: 1803mm Small: 1803mm Small: 1803mm
1780mm 2236mm 2692mm	<b>3</b>	610mm 762mm 914mm	Small: 1803mm Medium: 2692mm Medium: 2692mm
2390mm 2988mm 3606mm	<b>4</b>	610mm 762mm 914mm	Medium: 2692mm Large: 3607mm Large: 3607mm

### B&Q

**B&Q - MADE TO MEASURE DOUBLE SIDED SLIDING WARDROBE TRACK (L)2745MM - £120**

[http://www.diy.com/departments/made-to-measure-double-sided-sliding-wardrobe-track-l2745mm/822449\\_BQ.prd?ecamp=Seapla&ppc\\_type=shopping&ds\\_kids=92700014019477757&gclid=Cj0KEQIA](http://www.diy.com/departments/made-to-measure-double-sided-sliding-wardrobe-track-l2745mm/822449_BQ.prd?ecamp=Seapla&ppc_type=shopping&ds_kids=92700014019477757&gclid=Cj0KEQIA)

[nb3DBRCX2ZnSnMyO9dIBEiQAocXYH5bghhVeLTs4xls4jK1ChHc09HYpyUIdSxiB\\_pUAI-0aAgN58P8HAQ&dclid=CJiOnqDJrdECFUqB7QodD\\_IKGA](http://www.diy.com/departments/made-to-measure-double-sided-sliding-wardrobe-track-l2745mm/822449_BQ.prd?ecamp=Seapla&ppc_type=shopping&ds_kids=92700014019477757&gclid=Cj0KEQIA)

## Exterior of the Wardrobe

off the shelf products as possible part of the construction

### B&Q

**MADE TO MEASURE DOUBLE SIDED 1 PANEL MIRROR & GLASS SLIDING WARDROBE DOOR (W)550-740 MM - £340**

[http://www.diy.com/departments/made-to-measure-double-sided-1-panel-mirror-glass-sliding-wardrobe-door-w550-740-mm/850700\\_BQ.prd?icamp=recs&rrec=true](http://www.diy.com/departments/made-to-measure-double-sided-1-panel-mirror-glass-sliding-wardrobe-door-w550-740-mm/850700_BQ.prd?icamp=recs&rrec=true)

**MADE TO MEASURE DOUBLE SIDED 1 PANEL GLASS SLIDING WARDROBE DOOR (W)741-913 MM - £380**

[http://www.diy.com/departments/made-to-measure-double-sided-1-panel-glass-sliding-wardrobe-door-w741-913-mm/1120365\\_BQ.prd?icamp=recs&rrec=true](http://www.diy.com/departments/made-to-measure-double-sided-1-panel-glass-sliding-wardrobe-door-w741-913-mm/1120365_BQ.prd?icamp=recs&rrec=true)



#### Glass panel finishes



Black glass



Cappuccino glass



Cream glass



Soft white glass

#### Mirror panel finish



Silver mirror

#### Frame finish



Aluminium



# Bespoke Wardrobe Design - Elements

## Interior of the Wardrobe - Shell Units

off the shelf products as possible part of the construction

### IKEA

**PAX - White** (the width of the space is 255cm, using these units we could have 3 x 75cm = 225 cm with 15cm space either side or 2 x 75cm + 100cm = 250cm making full use of the pace and more room in the middle for larger drawres and TV. This needs of be discussed though asin this case the doors wouldn;t cover the middle section but more options for storage)

Colour & design Product measurements (limited)

**74.8x58x236.4 cm - £55** (the height from floor to ceiling is circa 235cm, very snug fit need to recheck but will get full use of space vertically)

<http://www.ikea.com/gb/en/products/wardrobes/fitted-wardrobes/pax-wardrobe-frame-white-art-20214571/>



Wardrobe frame

**PAX**

White

**£55**

75x58x236 cm

Article no: 202.145.71

The price reflects selected options

Doors and interiors are sold separately.

[View more product information](#)

10 year guarantee. [Read about the terms in the guarantee brochure.](#)

FRAME COLOUR

**white**

No store selected



Available online

**100x58x236 cm - £65**

<http://www.ikea.com/gb/en/products/wardrobes/fitted-wardrobes/pax-wardrobe-frame-white-art-50214560/>



Wardrobe frame

**PAX**

White

**£65**

100x58x236 cm

Article no: 502.145.60

The price reflects selected options

Doors and interiors are sold separately.

[View more product information](#)

10 year guarantee. [Read about the terms in the guarantee brochure.](#)

FRAME COLOUR

**white**

No store selected



Available online

# Bespoke Wardrobe Design - Elements

## Interior of the Wardrobe - Drawers, Hangers and Compartments off the shelf products as possible part of the construction

IKEA

### The KOMPLEMENT Range – Works with the PAX Shell on the previous page

<http://www.ikea.com/gb/en/search/?k=Komplement&N=0&No=0&Nr=AND%28content.type%3Ap%2Csku.browsable%3A1%29&summary=true>

Please see the link above for the various inserts available. Please note the sizes though. Most objects you can pick 100cm - 75cm and 50cm options.

If you want to have the 3 mirrored door option then the set-up we will use will be 3 75cm shells- so you'll only be able to use the 75cm options.

If you go for a design where we only use 2 doors but have the middle section visible we can use the 100cm shell for the middle and then all the insert sizes are available to use 100cm, 75cm & 50cm.

### Example Pieces



Sectioned shelves

## KOMPLEMENT

White

**£40**

75x58 cm

Article no: 202.577.73

The price reflects selected options

[View more product information](#)

10 year guarantee. Read about the terms in the guarantee brochure.

SIZE

**75x58 cm**

No store selected

 Available online



Sectioned shelves

## KOMPLEMENT

Black-brown

**£50**

100x58 cm

Article no: 102.577.64

The price reflects selected options


[View more product information](#)

10 year guarantee. Read about the terms in the guarantee brochure.

SIZE

**100x58 cm**

No store selected

 Available online

# Bespoke Wardrobe Design - Elements



Clothes rail  
**KOMPLEMENT**  
Dark grey

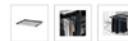
**£4**

75 cm  
Article no: 002.569.44  
The price reflects selected options  
[View more product information](#)

10 year guarantee. Read about the terms in the guarantee brochure.

SIZE
75 cm
100 cm
50 cm
<b>75 cm</b>

No store selected [Available online](#)



Pull-out trouser hanger  
**KOMPLEMENT**  
Dark grey

**£20**

75x58 cm  
Article no: 302.573.72  
The price reflects selected options  
[View more product information](#)

10 year guarantee. Read about the terms in the guarantee brochure.

SIZE
<b>75x58 cm</b>
100x35 cm
100x58 cm
50x35 cm
50x58 cm
75x35 cm
<b>75x58 cm</b>



Pull-out tray with shoe rail  
**KOMPLEMENT**  
White/white

**£22**

75x58 cm  
Article no: 090.114.95  
The price reflects selected options  
[View more product information](#)

10 year guarantee. Read about the terms in the guarantee brochure.

COLOUR
<b>white white</b>

SIZE
<b>75x58 cm</b>

No store selected [Available online](#)



Pull-out tray with insert  
**KOMPLEMENT**  
White/grey

**£26**

50x58 cm  
Article no: 490.115.25  
The price reflects selected options  
[View more product information](#)

10 year guarantee. Read about the terms in the guarantee brochure.

SIZE
<b>50x58 cm</b>
100x58 cm
<b>50x58 cm</b>
75x58 cm

No store selected [Available online](#)



Pull-out tray with divider  
**KOMPLEMENT**  
White/transparent

**£28**

100x58 cm  
Article no: 190.110.65  
The price reflects selected options  
[View more product information](#)

10 year guarantee. Read about the terms in the guarantee brochure.

SIZE
<b>100x58 cm</b>
100x58 cm
50x58 cm
75x58 cm

No store selected [Available online](#)



Glass shelf  
**KOMPLEMENT**  
White

**£16**

75x58 cm  
Article no: 802.576.47  
The price reflects selected options  
[View more product information](#)

10 year guarantee. Read about the terms in the guarantee brochure.

SIZE
<b>75x58 cm</b>
100x58 cm
50x58 cm
<b>75x58 cm</b>

No store selected [Available online](#)



Drawer with glass front  
**KOMPLEMENT**  
Black-brown

**£30**

100x58 cm  
Article no: 402.467.12  
The price reflects selected options  
[View more product information](#)

10 year guarantee. Read about the terms in the guarantee brochure.

SIZE
<b>100x58 cm</b>
100x58 cm
50x58 cm
75x58 cm

No store selected [Available online](#)



Drawer with glass front  
**KOMPLEMENT**  
White

**£28**

75x58 cm  
Article no: 102.466.95  
The price reflects selected options  
[View more product information](#)

10 year guarantee. Read about the terms in the guarantee brochure.

SIZE
<b>75x58 cm</b>
100x58 cm
50x58 cm
<b>75x58 cm</b>

No store selected [Available online](#)

# BESPOKE WARDROBE DESIGN 1

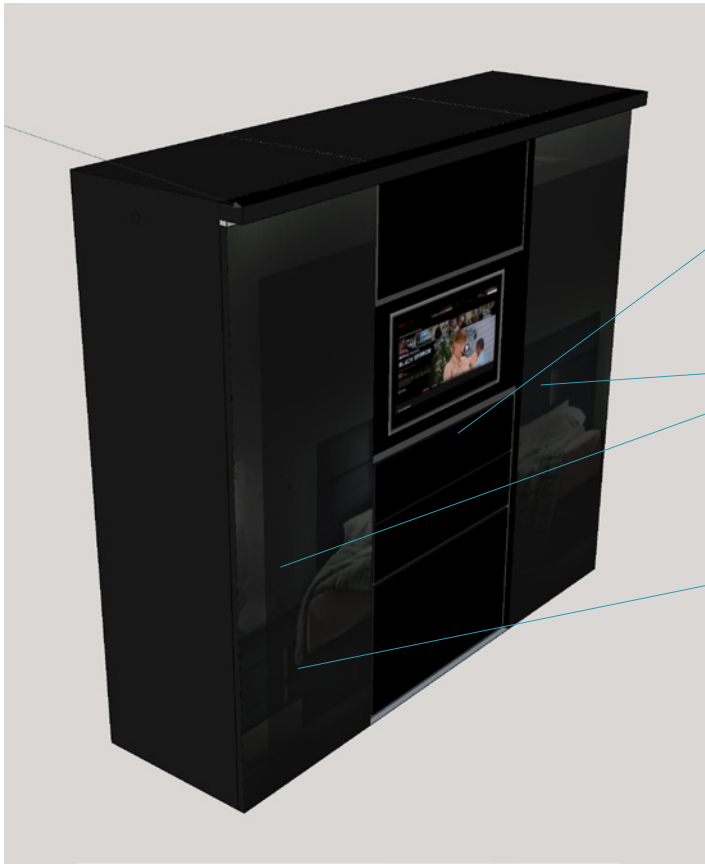
75 x 100 x 75cm Shell = 250cm

2 Black Glass/Mirror Doors Used

Middle Section with TV Unconvered



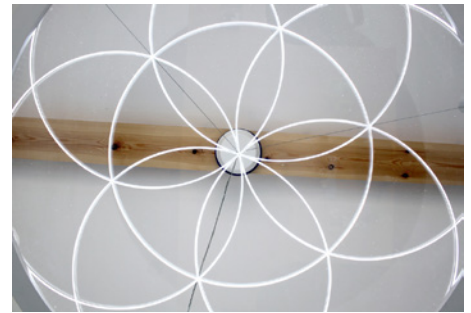
# DESIGN 1 - 75 x 100 x 75cm Shell = 250cm



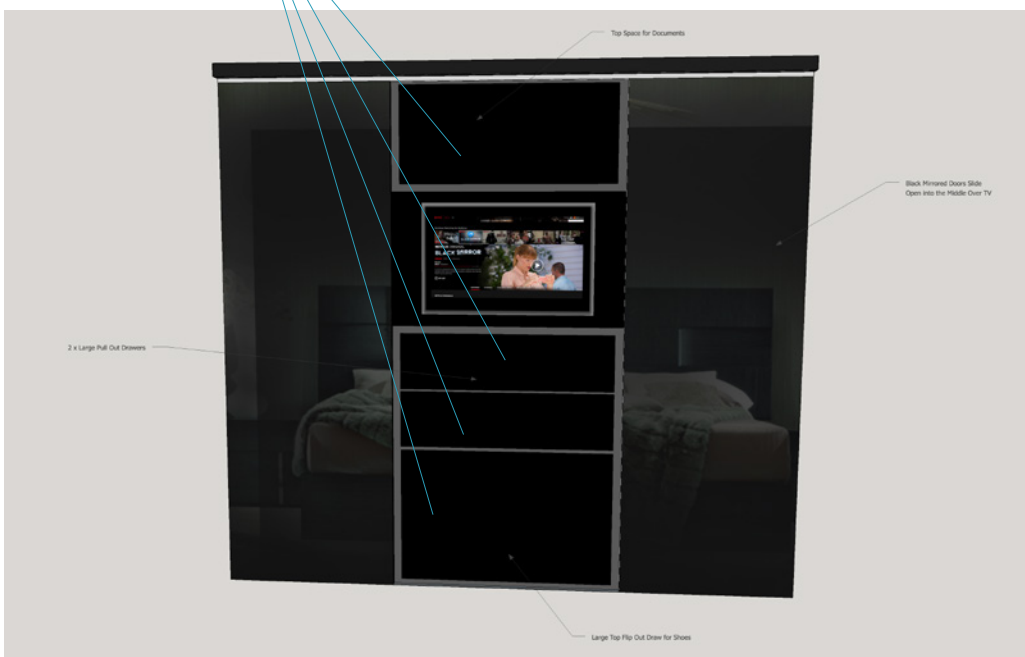
The middle section is shared storage space at a wider 100cm dimension giving extra room for the TV and shared drawers. Although unconcealed the design would be perfectly matched to the wardrobe and room and act as a design feature and piece division.

have their own side  
75 x 58 x 235cm of storage each with their own compartments hidden by mirrored doors

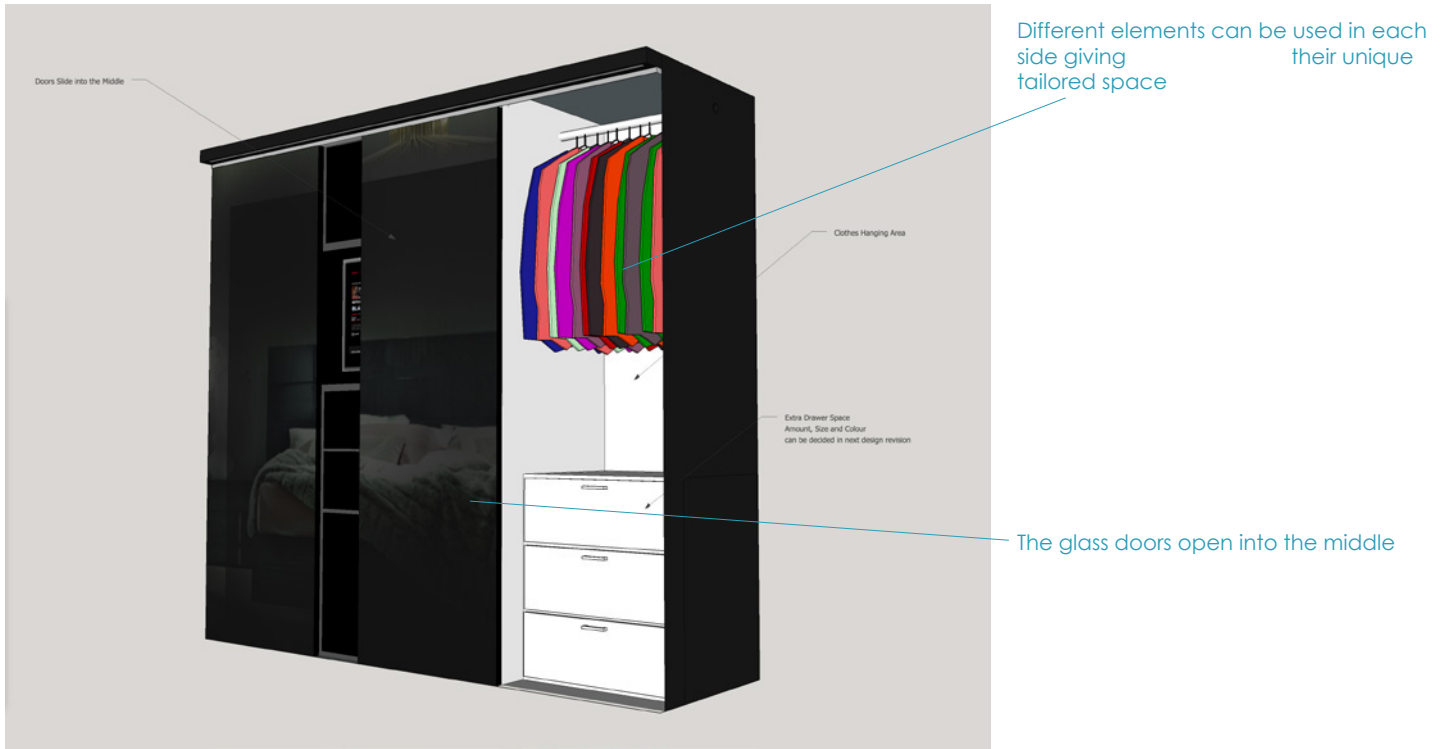
I could create unique designed to be frosted onto the glass or even lit up. See example below from the Charwood project or ask me what is possible



As these drawers are to be visible they could have the same black glass/mirrored front as the doors or similar to the Monte Carlo furniture



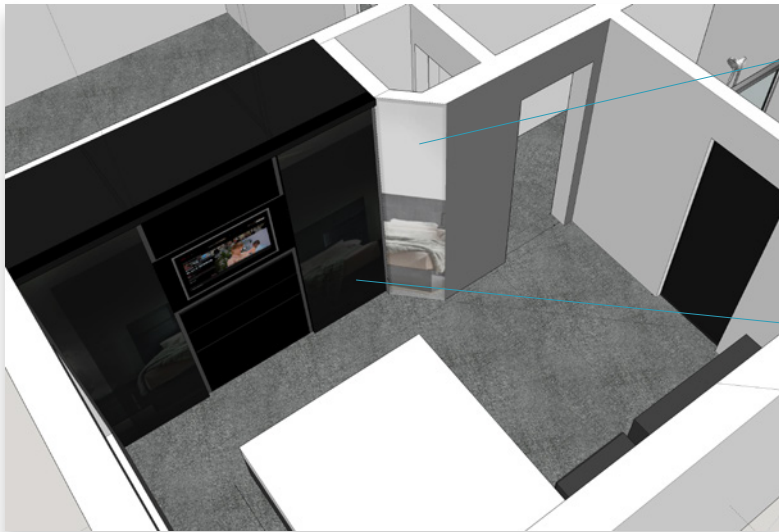
# DESIGN 1 - 75 x 100 x 75cm Shell = 250cm



An overhang with in-built LED downlight



# DESIGN 1 - In-situ



Full length mirror on the sloped wall for dressing

This design is 25cm wider than Design 2 and fills up more of the space only leaving a couple of cms either end



Sliding en-suite door to match black glass of the wardrobe. The door can be on runners or slide into the wall.



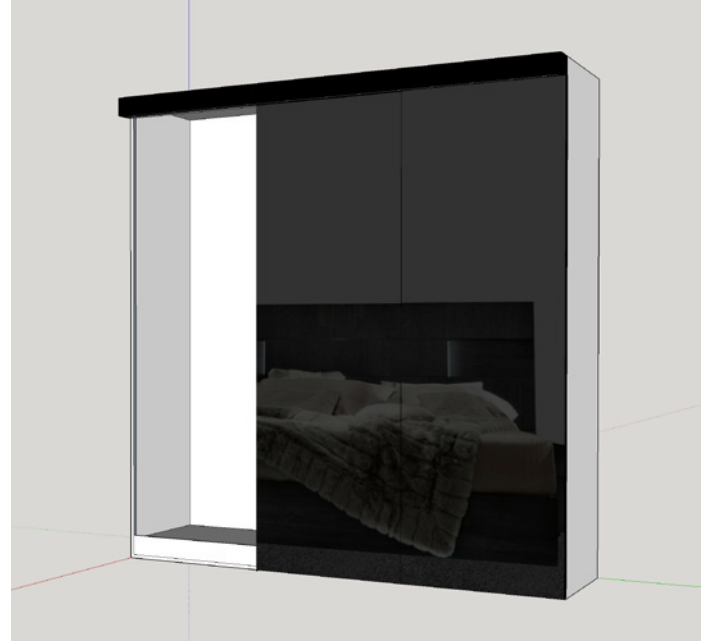
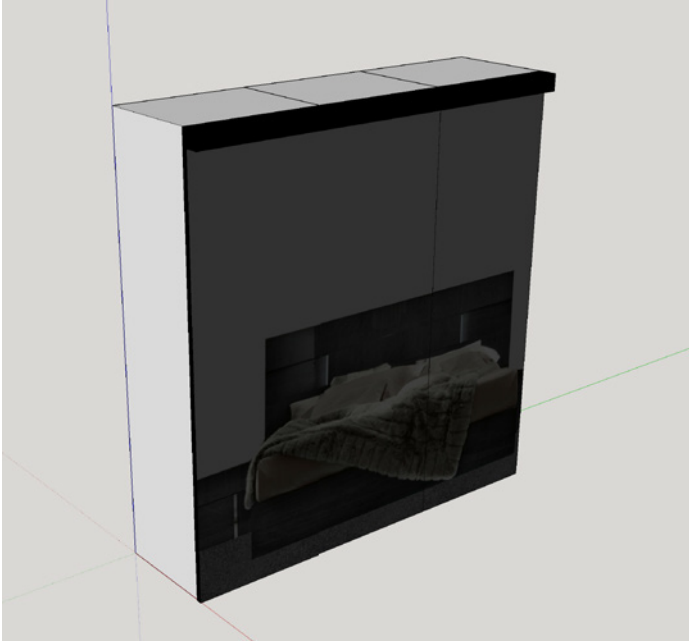
## BESPOKE WARDROBE DESIGN 2

75 x 75 x 75cm Shell = 225cm

3 Black Glass/Mirror Doors Used

Middle Section with TV Concealed

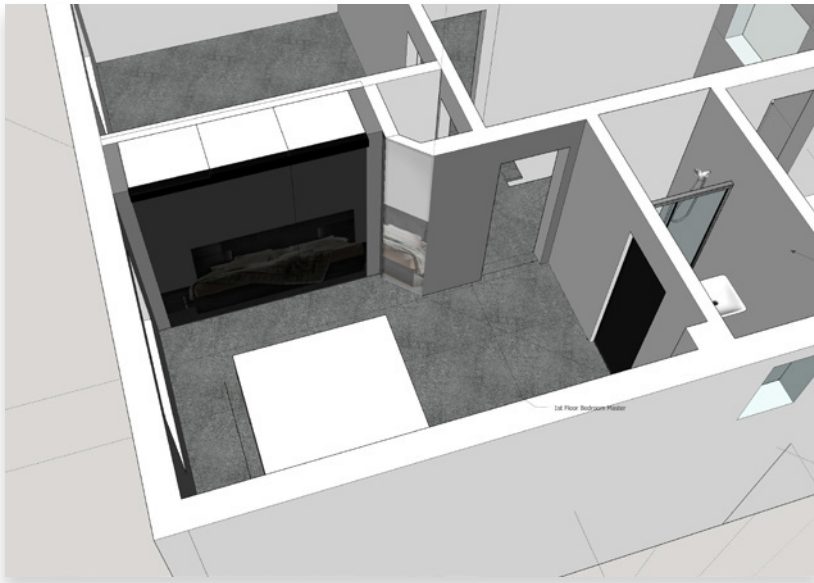
## DESIGN 2 - 75 x 75 x 75cm Shell = 225cm



This design will use 3 x 75 shells each covered by its own black glass/mirrored door.  
The design for compartments for both this design and Design 1 will be discussed with  
▷ give them their perfect set-up.



## DESIGN 2 - In-situ



The design will be refined internally when the overall layout is confirmed with

